

山东省标准设计



# 预制混凝土花格

统一编号 DBJT14—3—83      分类号 LJ109

山东省标准设计办公室出版

1988

# 预 制 混 凝 土 花 格

批准部门 山东省基本建设委员会  
 主编单位 烟台建筑设计院  
 实行日期 1985年1月

批准文号 鲁建发(1984)155号  
 统一编号 DBJT 14-3-83  
 分类号 LJ 109

主编单位负责人 李树田  
 单位技术负责人 李树田  
 技术审定人 赵理光  
 设计负责人 李树田

## 目 录

### 图 纸 内 容

封面	
目录	1
说明	2
组合立面 1	3
组合立面 2	4
组合立面 3	5
组合立面 4	6
组合立面 5	7
组合立面 6	8
组合立面 7	9
组合立面 8	10

### 图 纸 内 容

组合立面 9	11
组合立面 10	12
组合立面 11	13
组合立面 12	14
组合立面 13	15
组合立面 14	16
组合立面 15	17
组合立面 16	18
组合立面 17	19
组合立面 18	20
组合立面 19	21

校核	李树田
设计	李树田
制图	李树田

目 录

分类号	LJ 109
页	1

# 图 纸 内 容

组合立面	20	22
组合立面	21	23
组合立面	22	24
组合立面	23	25
予制混凝土花格	1	26
予制混凝土花格	2	27
予制混凝土花格	3	28
予制混凝土花格	4	29
予制混凝土花格	5	30
予制混凝土花格	6	31
予制混凝土花格	7	32
予制混凝土花格	8	33
予制混凝土花格	9	34
予制混凝土花格	10	35
拼装		36

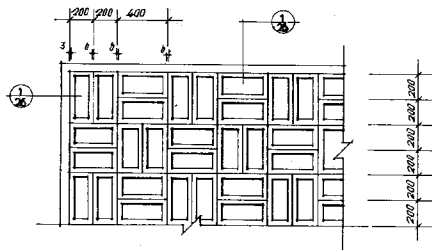
## 说 明:

- 1 本图集供一般工业及民用建筑装饰使用。
- 2 “予制混凝土花格”采用单体花格拼装装饰整体花格,单体花格宜采用,白水泥,白石子,200号细石混凝土制做,呈洁白色,也可掺入颜料,制成彩色花格,但色泽应浅淡清雅,采用普通水泥200号细石混凝土制做时,水泥标号不得低於400号,拼装完成后表面刷白水泥浆,要求均匀光滑,也可以制成彩色,花格细砌应做嵌缝深5毫米。
- 3 单体花格制做时,模板应平直,且易拆卸,内表面刨光刷润滑油,脱模后,有砂眼,不平处,可用纯水泥浆,修补平整光滑。
- 4 单体花格用1:1.5水泥砂浆细砌,结合厚度,高度均不宜大於3000,面积较大时,工程设计人应采取相应措施,以保证其结构稳定性。
- 5 采用本图集时,也可根据工程要求,由工程设计人另行组合。
- 6 采用本图集施工时应按“建筑按装工程施工及验收规范”的有关规定执行。
- 7 本图集所注尺寸均以毫米为单位。

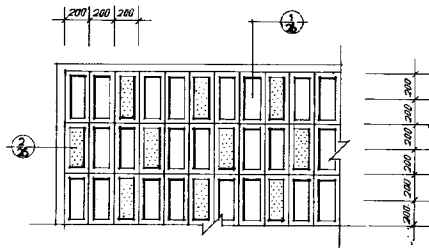
本图集详图编号及索引方法表如下:



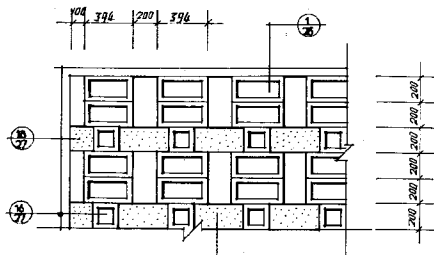
检 核	审 计	监 工	目 录 说 明	分 类 号	UD9
制 图	制 图	监 工		页	2



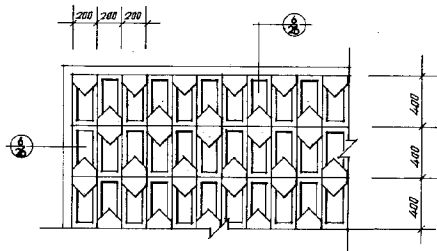
①



②



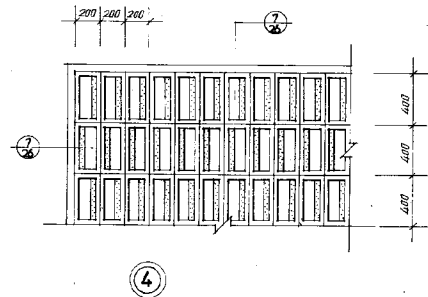
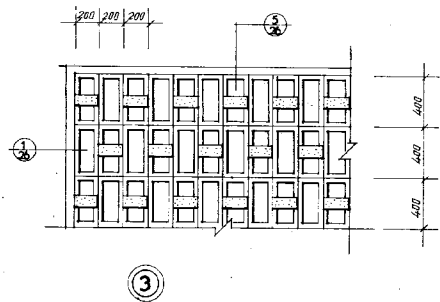
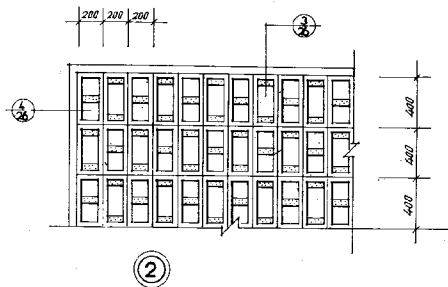
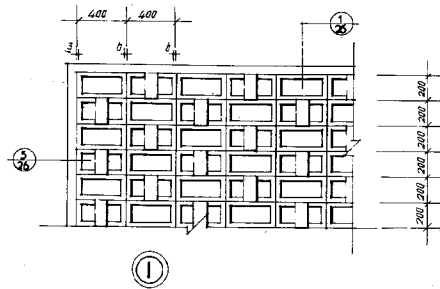
③

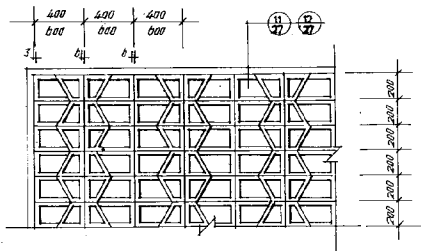


④

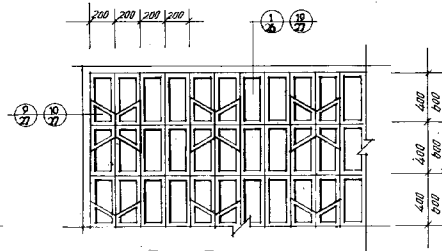
组合立面 1.

分类号	L7109
页	3

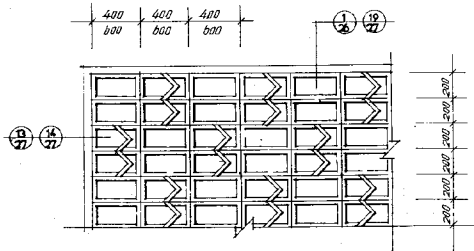




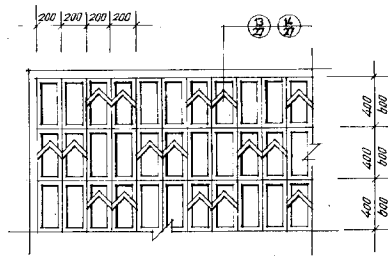
① ② 窗 600 × 200



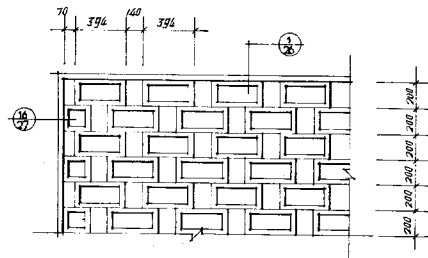
③ ④ 窗 600 × 200



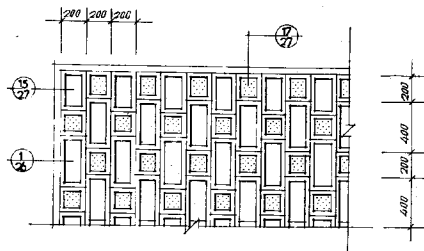
⑤ ⑥ 窗 600 × 200



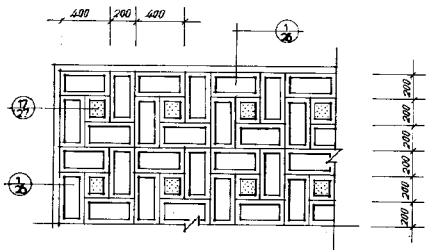
⑦ ⑧ 窗 600 × 200



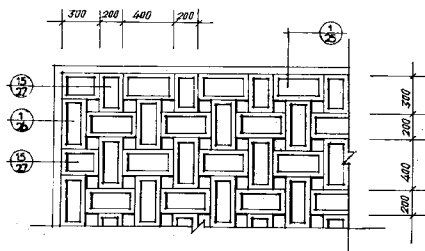
①



②



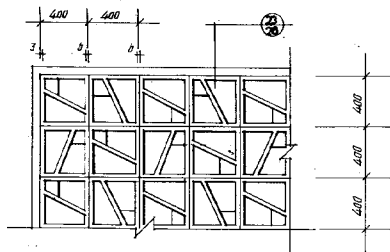
③



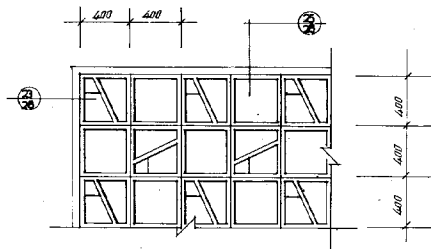
④

组合立面 4

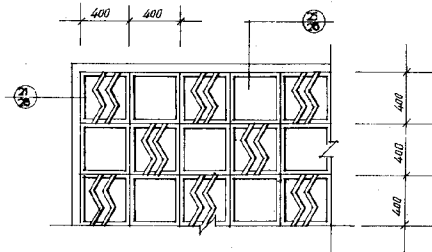
分类图 47109  
页 6



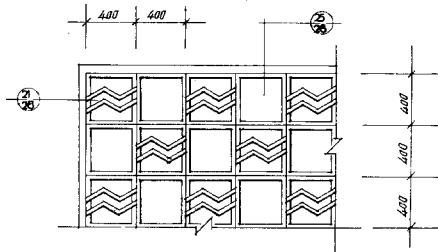
①



②

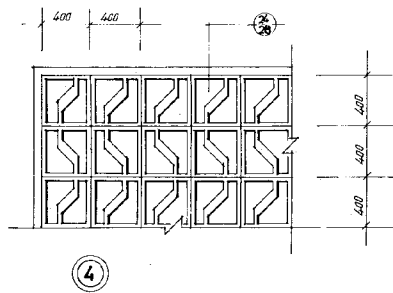
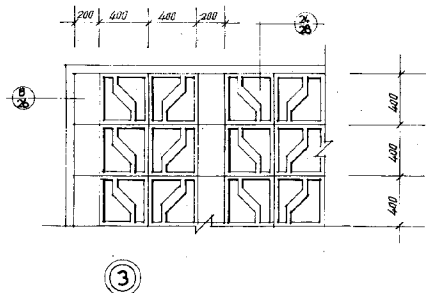
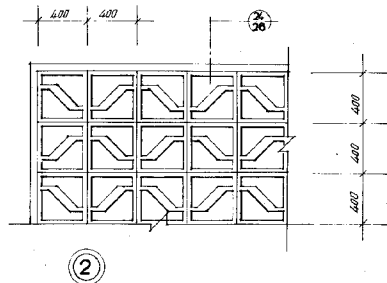
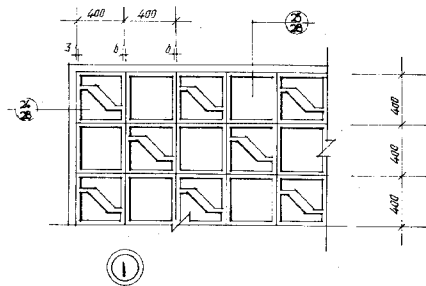


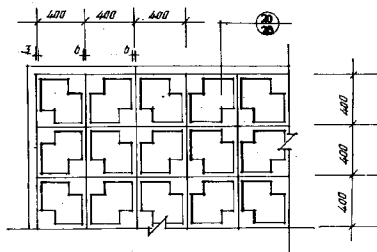
③



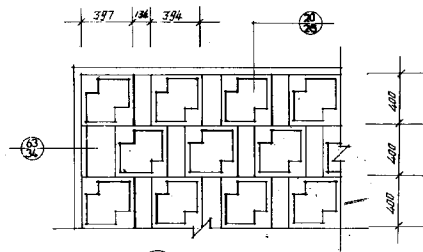
④



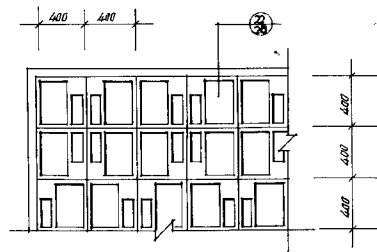




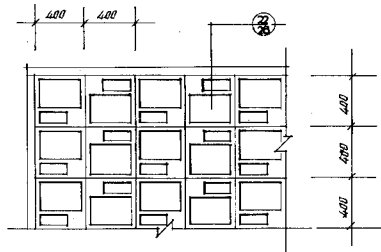
①



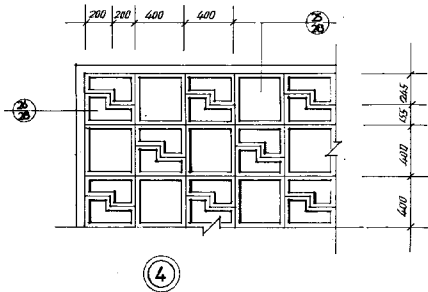
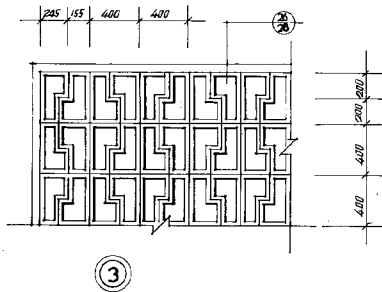
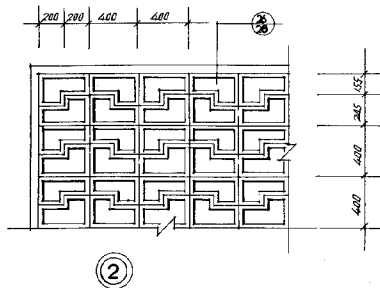
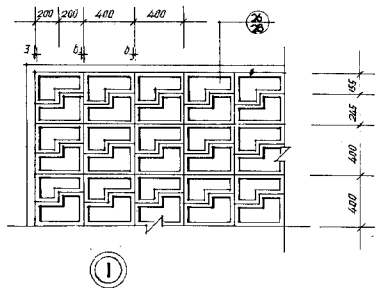
②



③

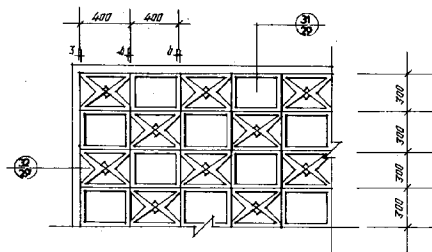


④

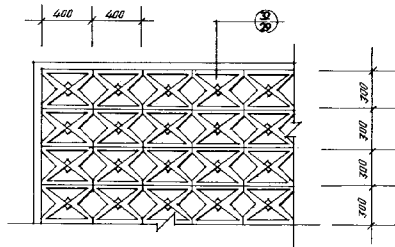


组合立面 8

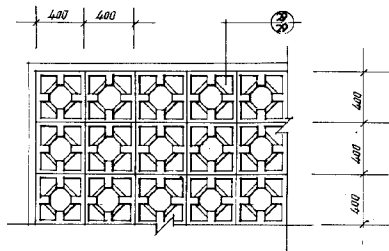
分装号	LJ104
页	10



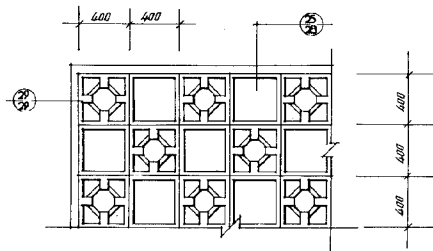
①



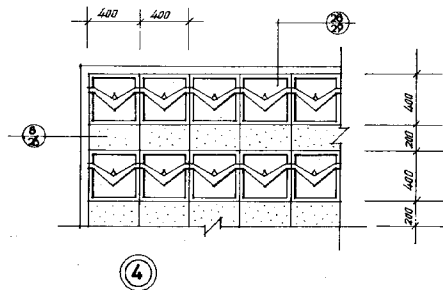
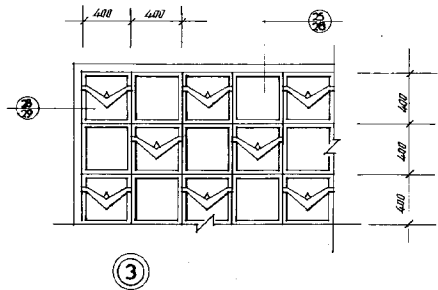
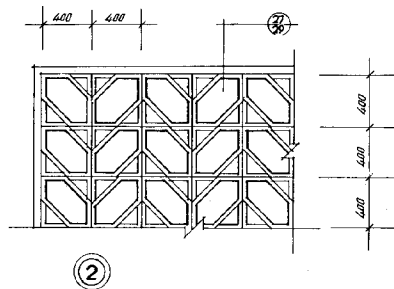
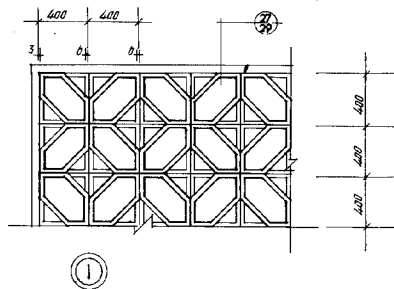
②

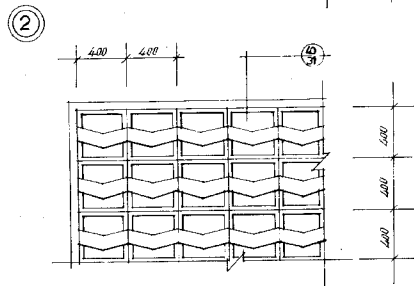
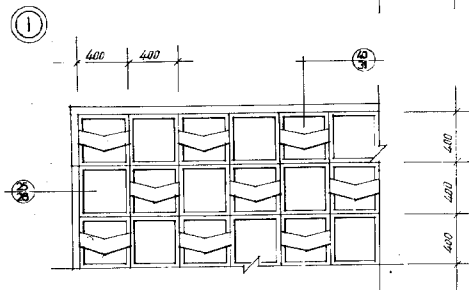
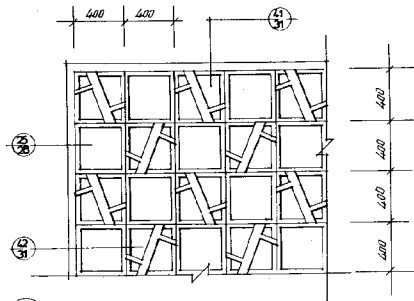
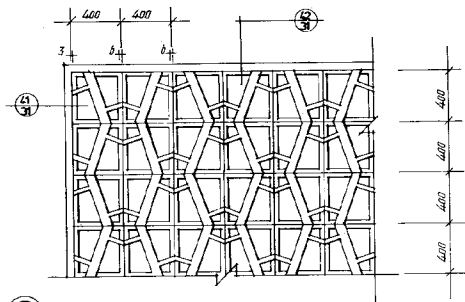


③



④



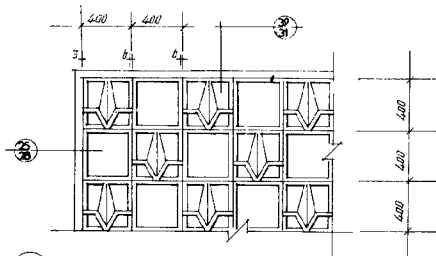


③

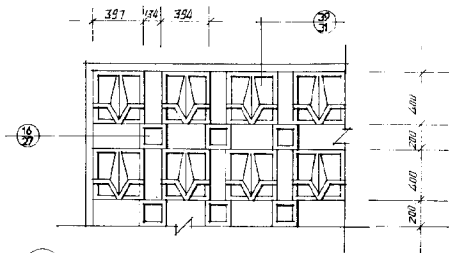
④

组合立面 II

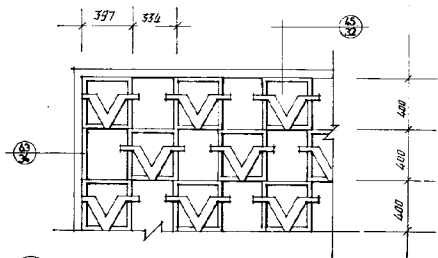
分装图 13



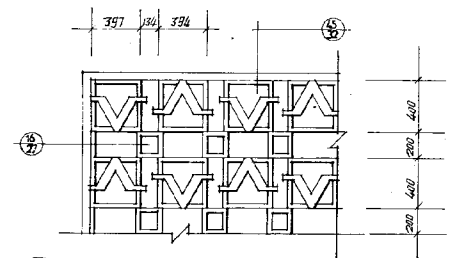
①



②



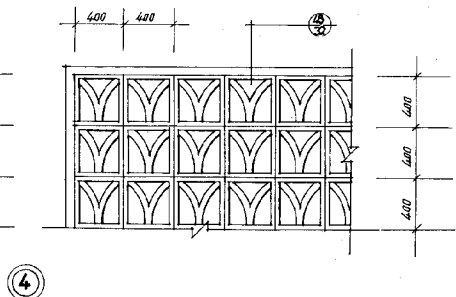
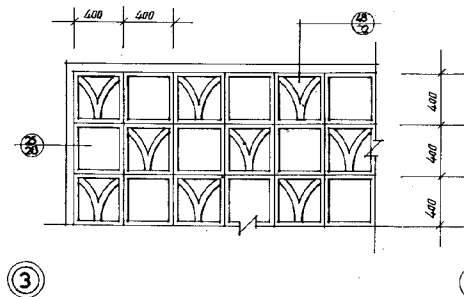
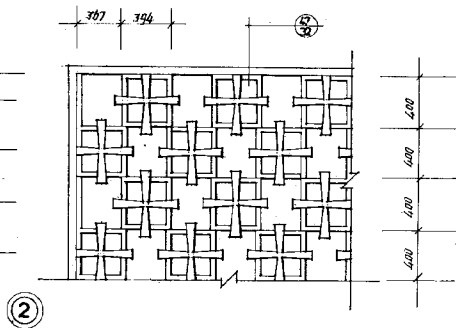
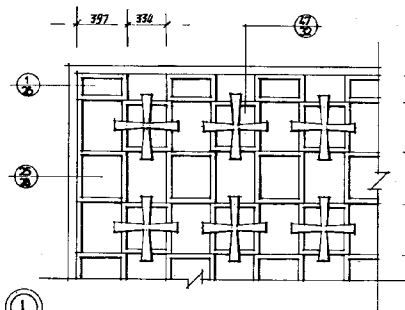
③



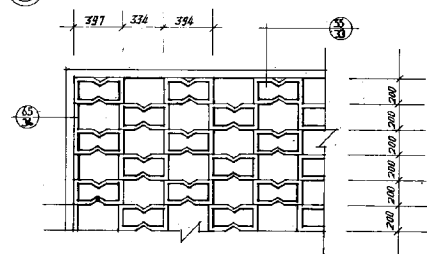
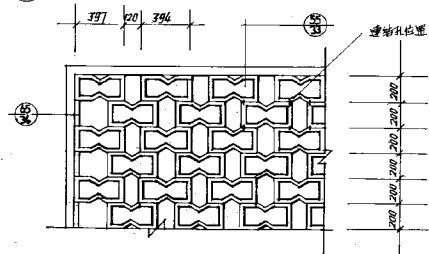
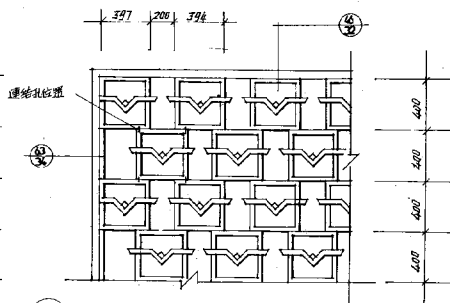
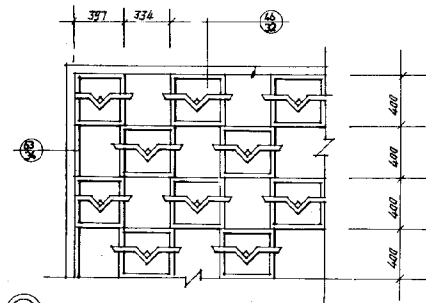
④

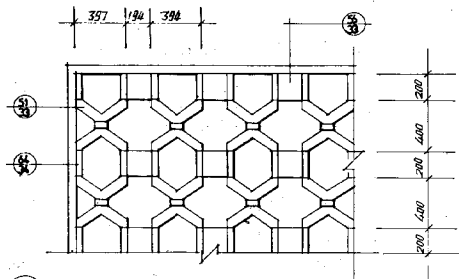
组合立面 12

分集器	LJ100
前	14

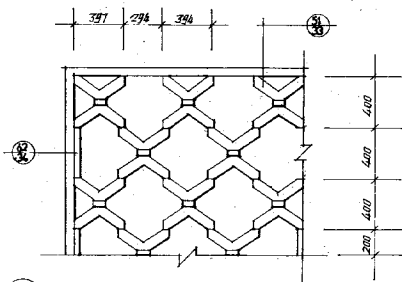




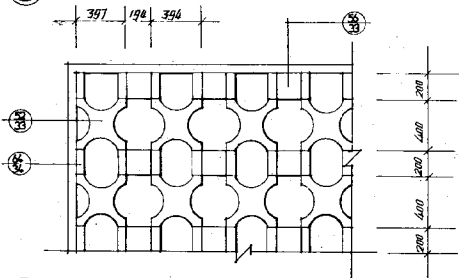




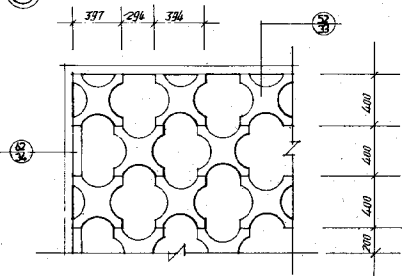
①



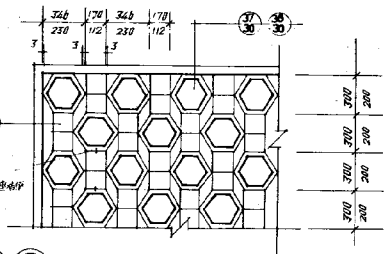
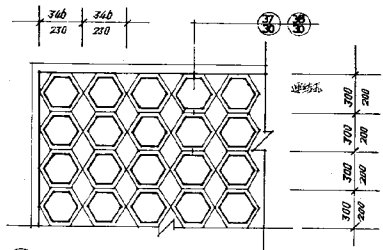
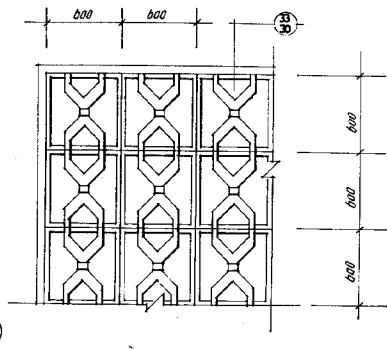
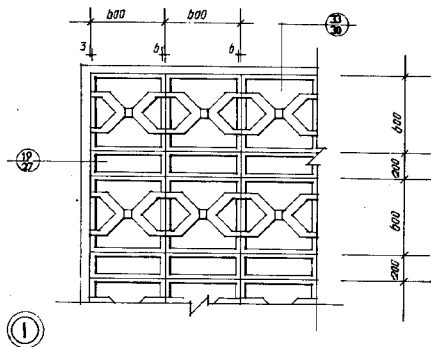
②



③

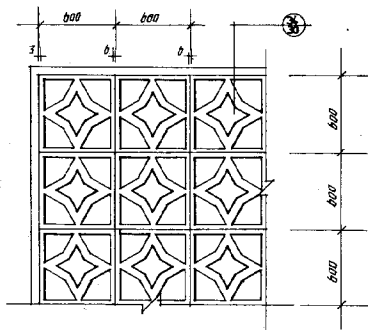


④

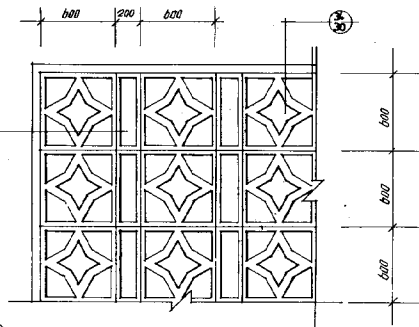


③ ④ 用于 230 X 200

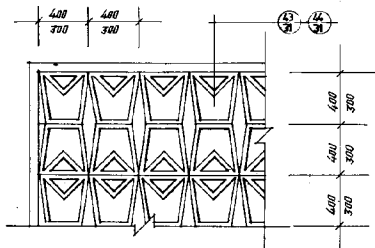
⑤ ⑥ 用于 230 X 200



①



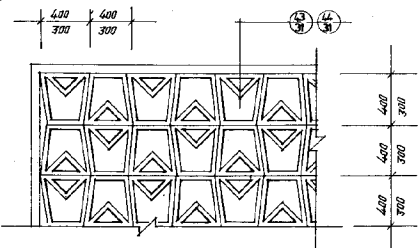
②



③

④

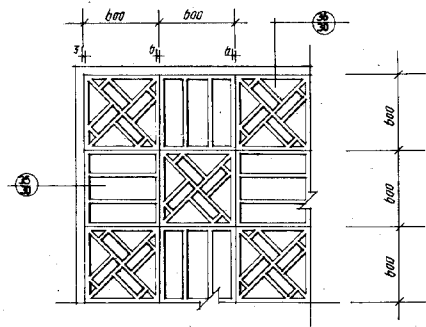
用材 300X300



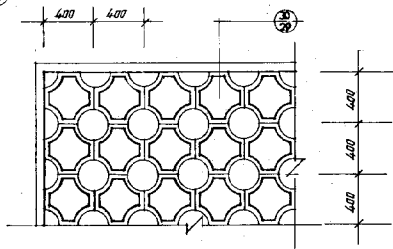
⑤

⑥

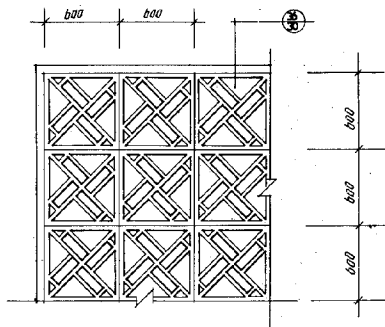
用材 300X300



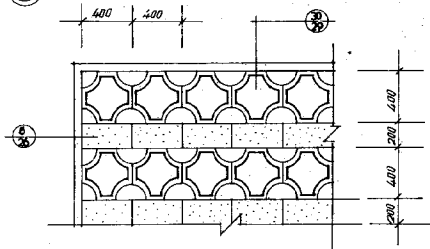
①



③



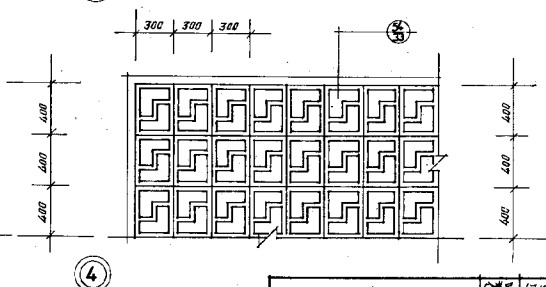
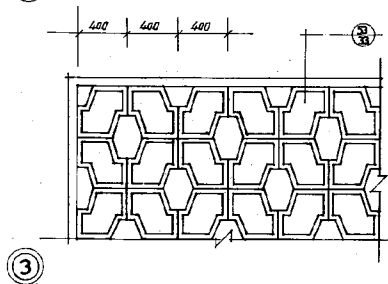
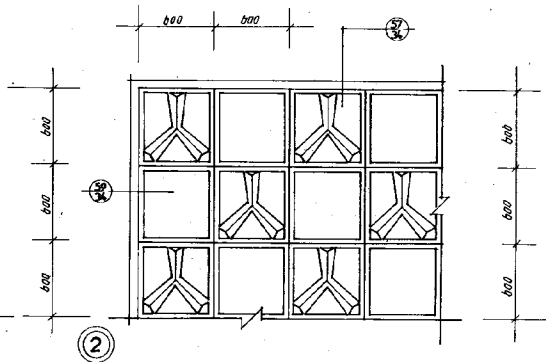
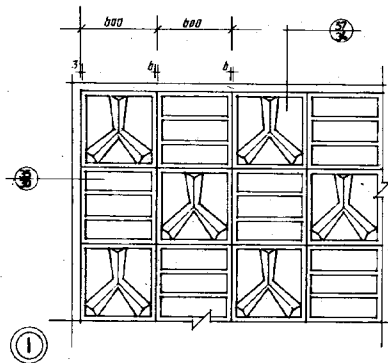
②

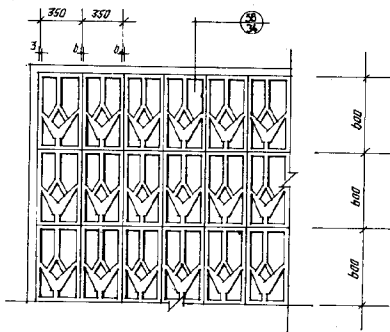


④

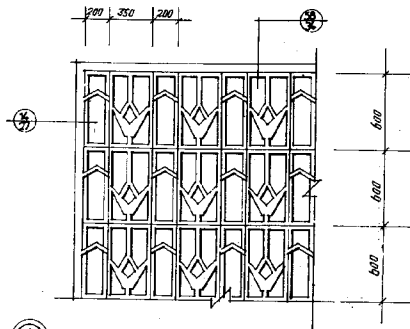
组合立面 18

分装图	LJ100
页	20

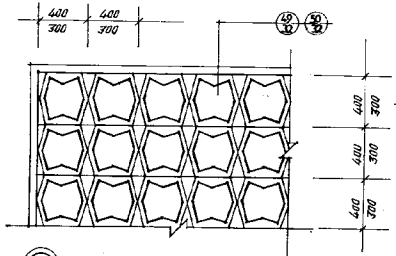




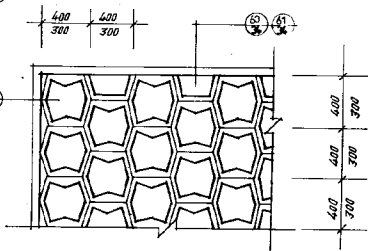
①



②



③



⑤

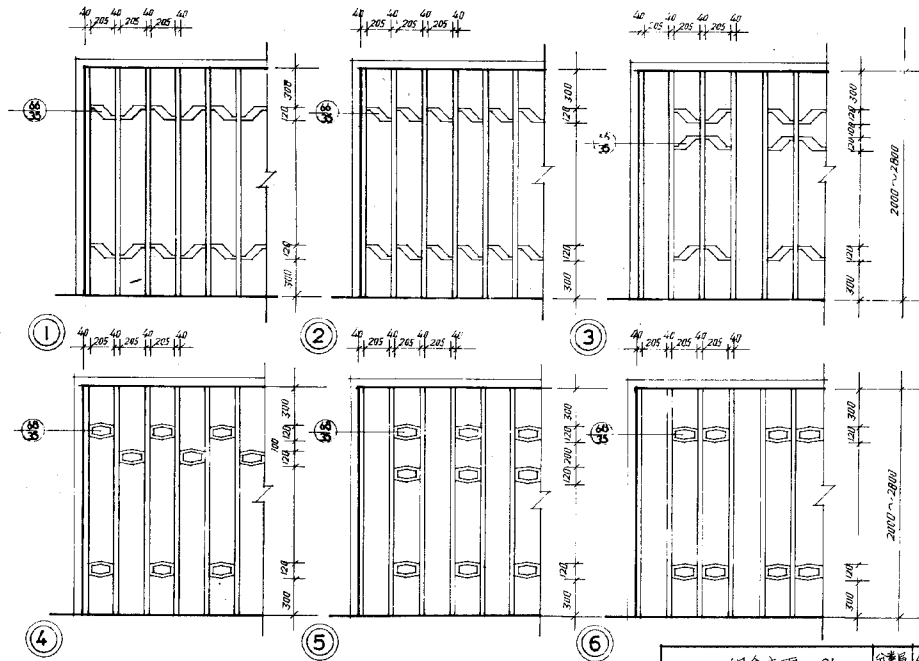
⑥

④ 适用于 300x300

适用于 300x300

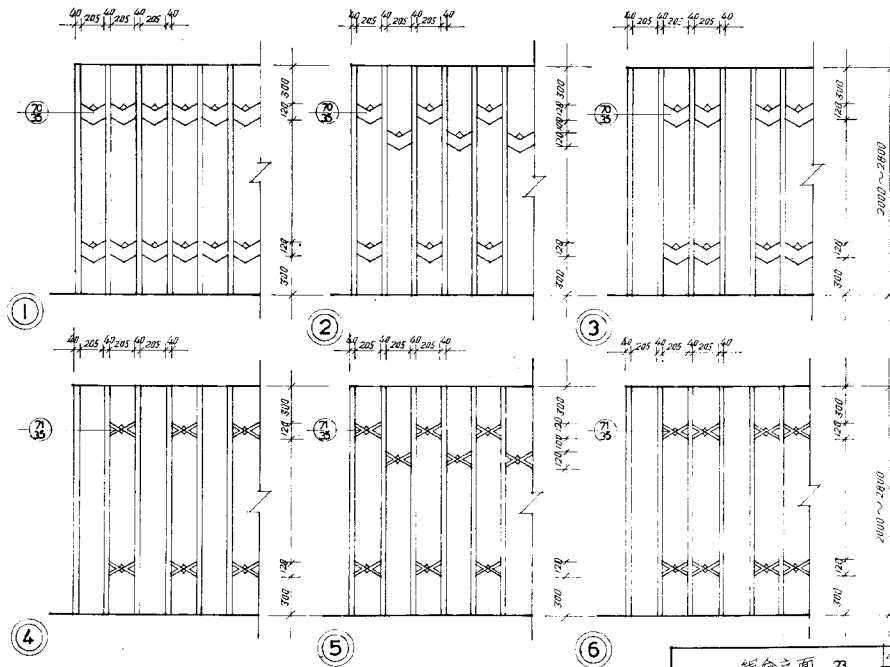
组合立面 20

分装图	47.104
页	22









Technical drawing of a rectangular plate. The overall dimensions are 394 (width) and 194 (height). A central rectangular hole has a width of 30 and a height of 70. The drawing includes dimension lines and arrows indicating the measurements.

①

Technical drawing of a rectangular frame. The main drawing shows a rectangle with dimensions 394 (width) and 196 (height). A detail view shows a section of the frame with dimensions 30 and 30.

③

⑤

⑦

②

Technical drawing of a rectangular frame. The overall width is 394, divided into 160 and 30. The overall height is 194, divided into 30 and 164. A note indicates a diameter of  $\phi 12 \pm 1$ .

④

⑥

⑧

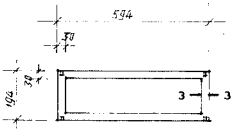
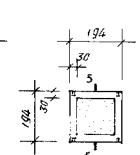
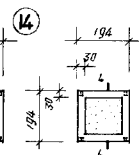
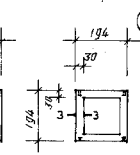
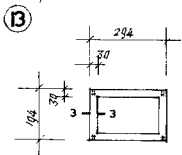
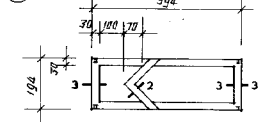
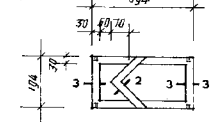
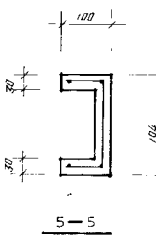
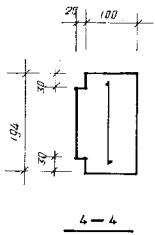
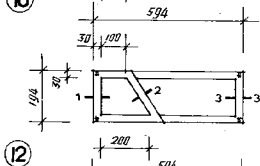
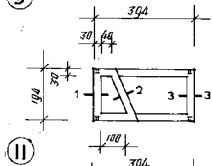
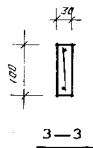
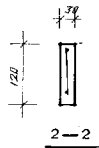
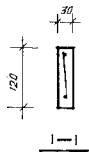
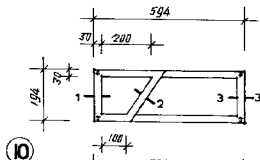
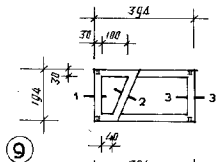
构件于制时连接处，每端各12孔洞，按装时1:2水泥砂浆填灌，并插入 $\phi 10$ ，长50，上下连接，

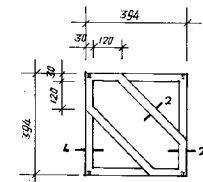
板件配筋：主筋 $\phi 4$ ，箍筋 $\phi 6$ ，间距150，

板件组砌，上下错开时，在柱脚处应满砌，

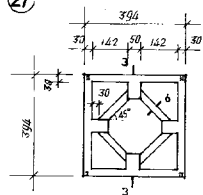
板件式构造，板件组砌处构造，参见图1-1，

构件于施工时连接处,另加 $\phi 12$ 钢筋,按装时1:2水泥砂浆浆灌满,伸入 $\phi 4$ 长50,上下连接。  
构件配筋:主筋 $\phi 4$ , 箍筋 $\phi 8$  间距 $\leq 150$ 。  
构件组砌,上下错开,在柱顶位置,砌墙筋。  
构件对通筋 $\phi 4$ , 构件靠近处砌墙筋 $\phi 4$ 并吊筋装。  
构件并通筋。

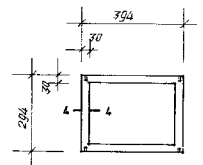




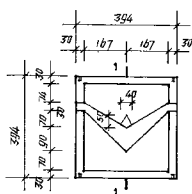
27



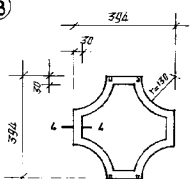
29



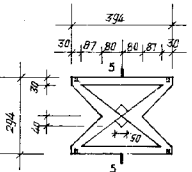
31



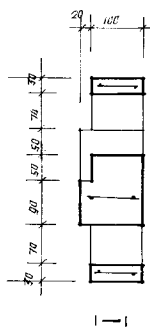
28



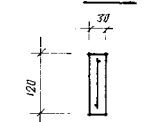
30



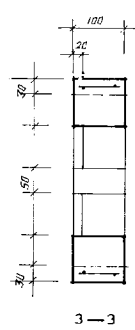
32



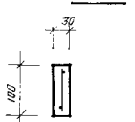
1-1



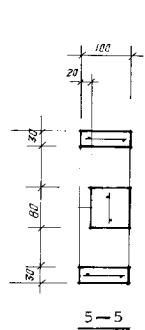
2-2



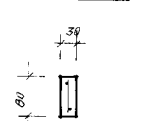
3-3



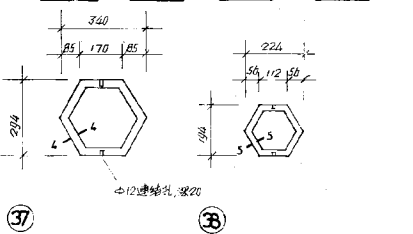
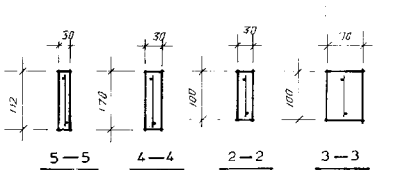
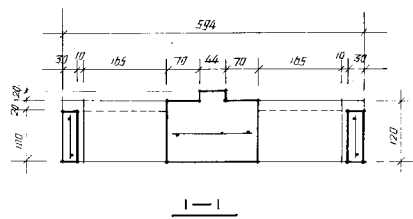
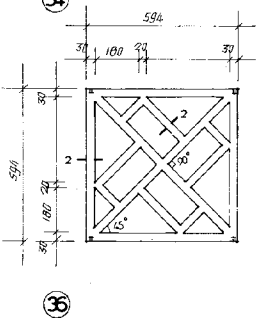
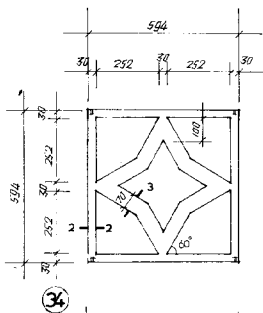
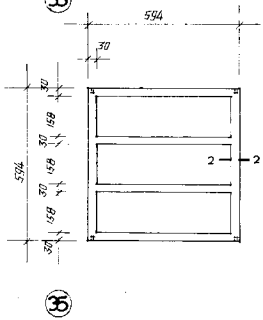
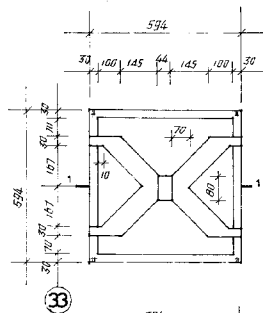
4-4



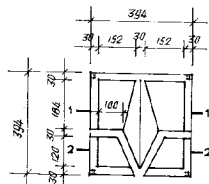
5-5



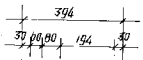
6-6



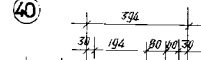
12 螺孔, 螺20



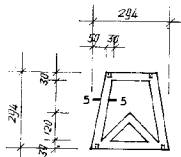
39



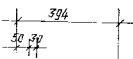
40



42



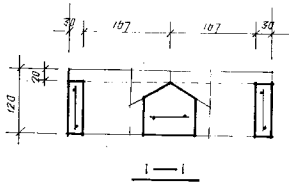
41



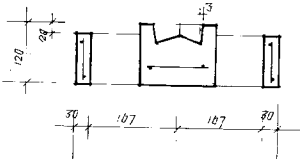
43



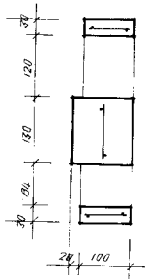
44



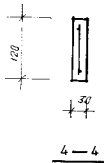
1-1



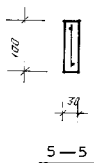
2-2



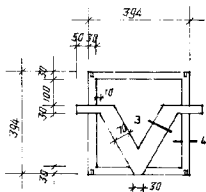
3-3



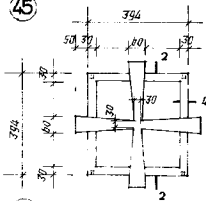
4-4



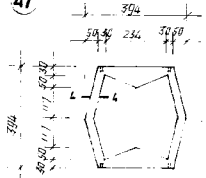
5-5



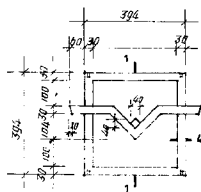
45



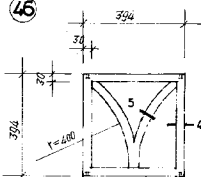
47



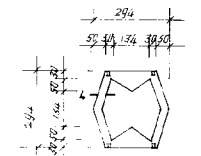
49



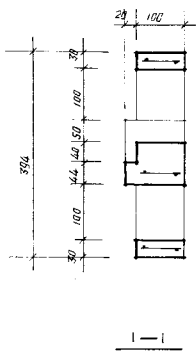
46



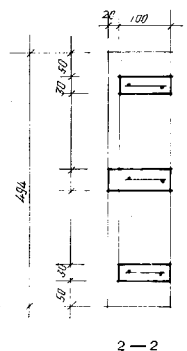
48



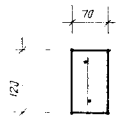
50



1-1



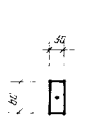
2-2



3-3



4-4



5-5

45 46 47 48 49 50

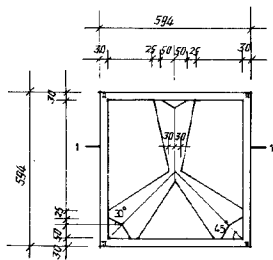
予制混凝土花格 7

分类目  
发

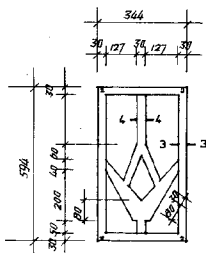
32



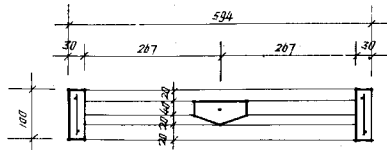




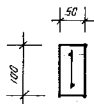
57



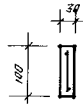
58



1-1



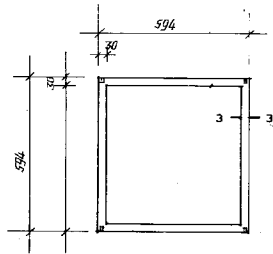
2-2



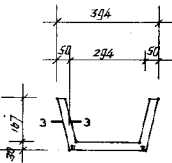
3-3



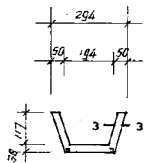
4-4



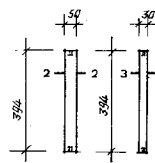
59



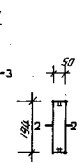
60



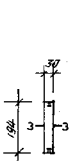
61



62



63



64

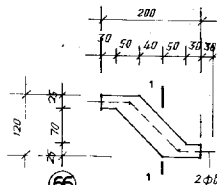
65

9 规格混凝土预制

分

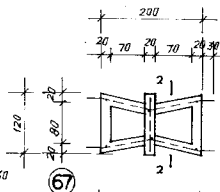
107

36

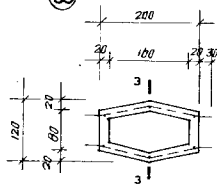


66

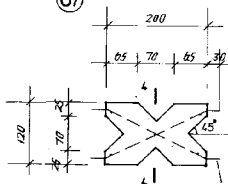
2Φb伸出30



67

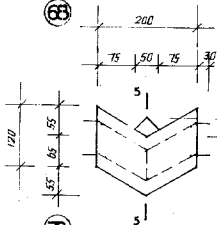


68

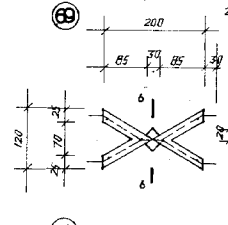


69

2Φb伸出30

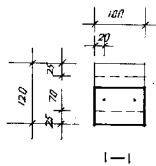


70

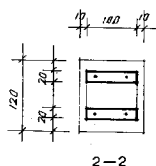


71

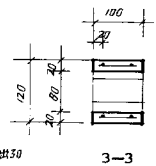
主筋Φb 付筋Φ4  
比例: 1:5



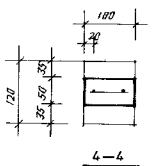
1-1



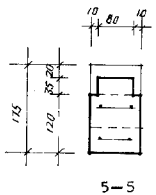
2-2



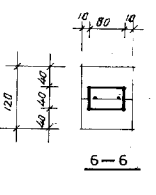
3-3



4-4



5-5

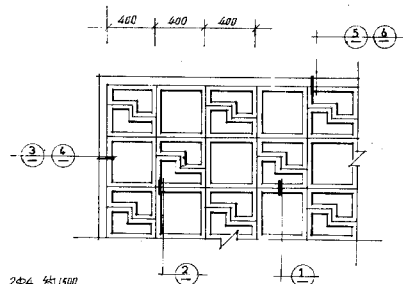


6-6

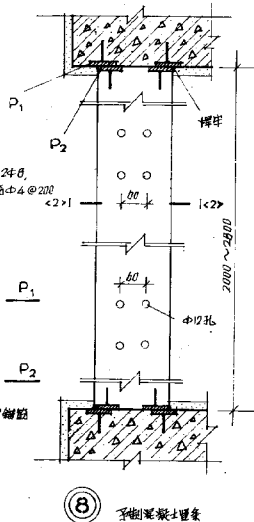
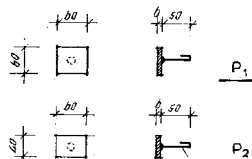
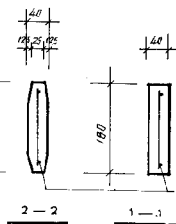
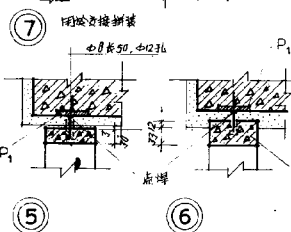
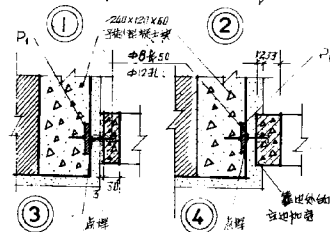
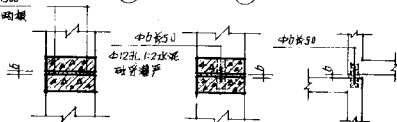
予制混凝土花格 10

分卷图 17.109

页 35



2 $\phi$ 4 约 1500  
窗通长窗框



拼装节点大样